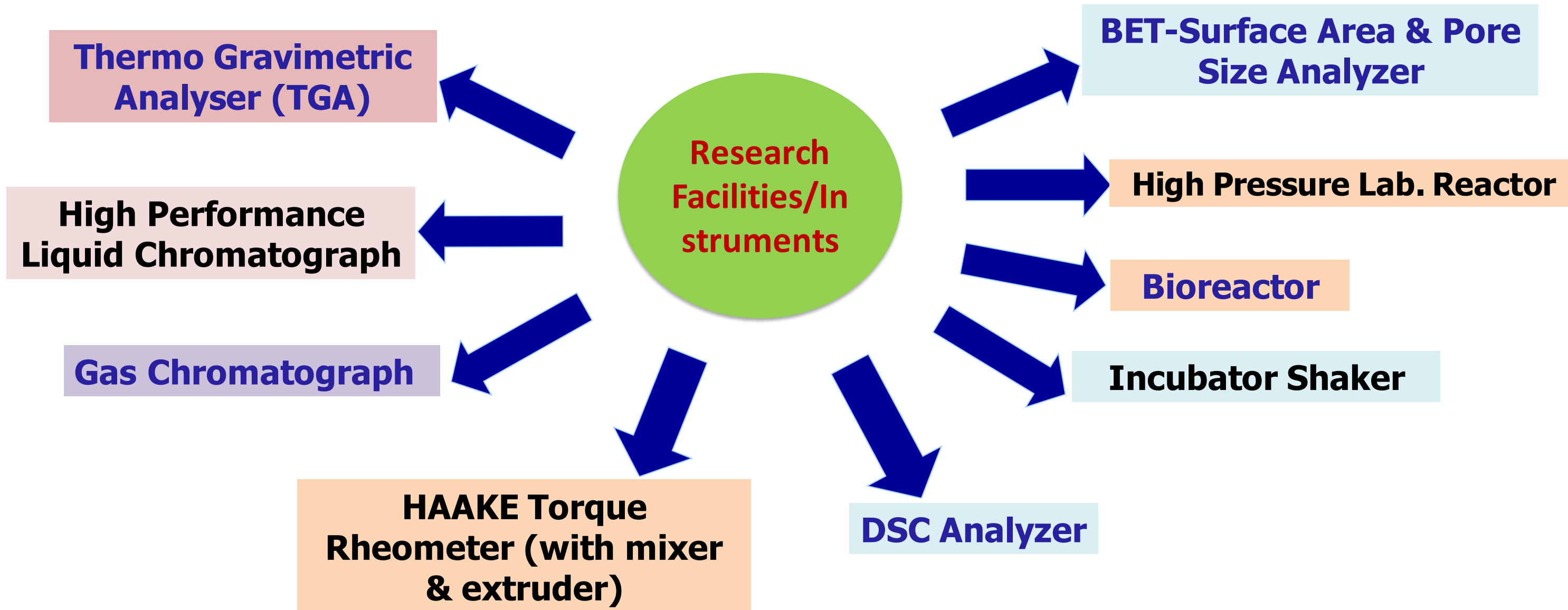


# Research Facilities and Instruments

## (At Department level)



# Glimpse of Research Facilities and Instruments (At Department level)



**Haake Torque Rheometer**  
(Polylab QC, Thermoelectron GMBH, Germany)

# Glimpse of Research Facilities and Instruments *(Contd..)*

## (At Department level)



**DSC Analyzer**  
**(Discovery DSC 25, Waters Ges MBH)**

# Glimpse of Research Facilities and Instruments *(Contd..)*

## (At Department level)



**High Pressure Lab Reactor  
(Model 5500, Parr, USA)**

# Glimpse of Research Facilities and Instruments *(Contd..)*

## (At Department level)



**Surface Area & Pore Size Analyzer  
(Anton Paar)**

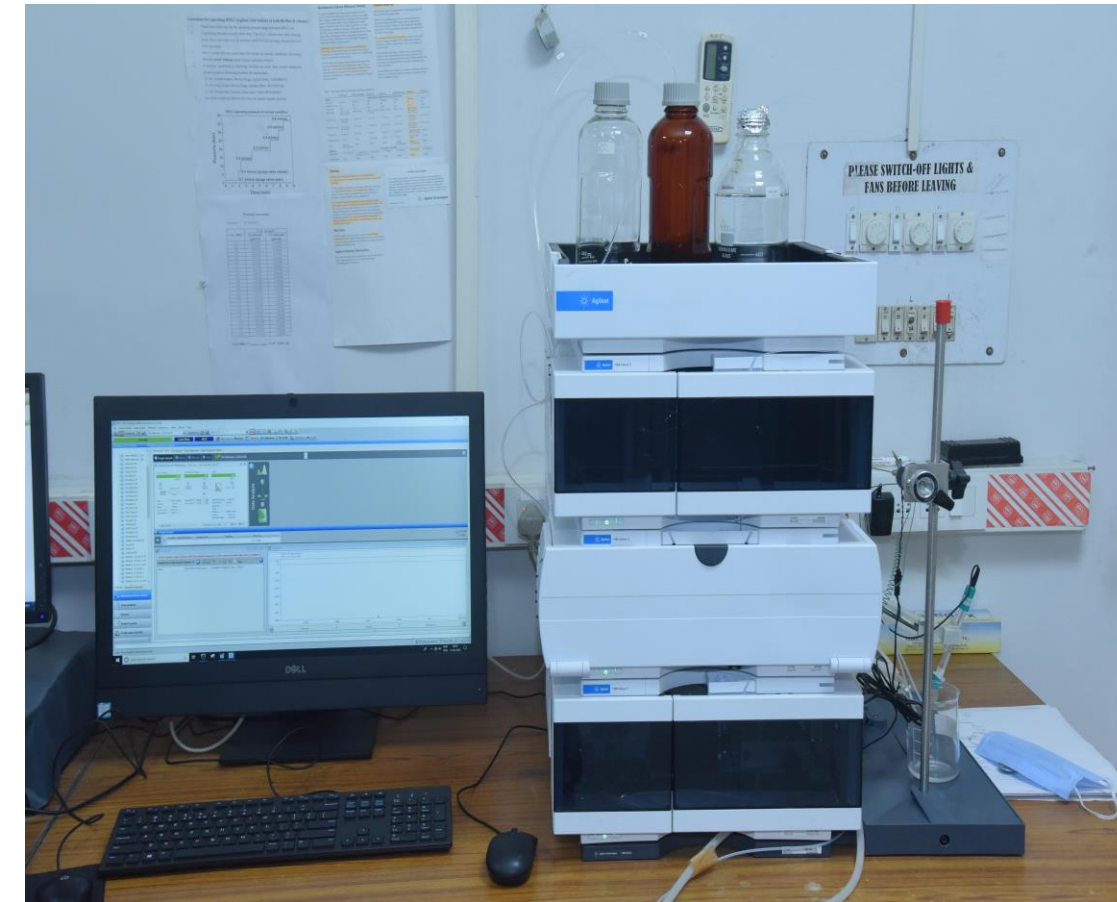
# Glimpse of Research Facilities and Instruments (Contd.) (At Department level)



**TGA**



**GC**



**HPLC**